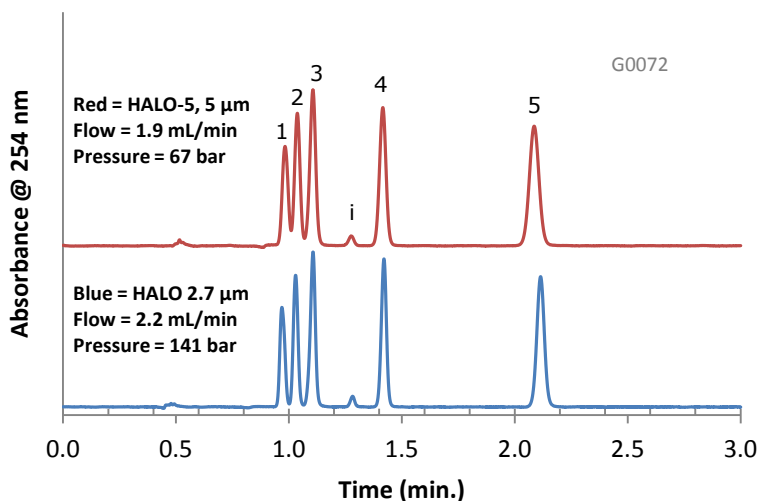


Comparable Selectivity between HALO-5 and HALO 2.7 µm Penta-HILIC Phases



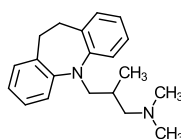
PEAK IDENTITIES:

1. Trimipramine
2. Amitriptyline
3. Doxepin
4. Nortriptyline
5. Amoxapine
- i = impurity

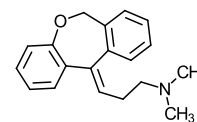
TEST CONDITIONS:

Column 1: 4.6 x 100 mm, HALO 5 µm Penta-HILIC
Part Number: 95814-605
Column 2: 4.6 x 100 mm, HALO 2.7 µm Penta-HILIC
Part Number: 92814-605
Mobile Phase: 5/95: A/B
A= 0.1 M Ammonium formate, pH=3 (adj.)
B= Acetonitrile
Flow Rate: See chart
Pressure: See chart
Temperature: 30°C
Detection: UV 254 nm, VWD
Injection Volume: 2.0 µL
Sample Solvent: 10/90: Water/Acetonitrile
Response Time: 0.02 sec.
Flow Cell: 2.5 µL semi-micro
LC System: Shimadzu Prominence UFLC XR
ECV: ~14 µL

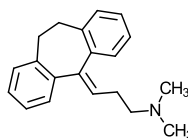
STRUCTURES:



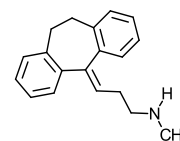
Trimipramine



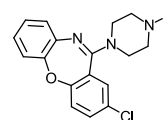
Doxepin



Amitriptyline



Nortriptyline



Amoxapine

Similar selectivity is achieved between the 5 µm and 2.7 µm HALO Penta-HILIC particle sizes through a slight flow rate adjustment allowing easy method transfer.